



HTD-RS-A1 AC220V 110V LED high power rigid strip light SPEC 2019

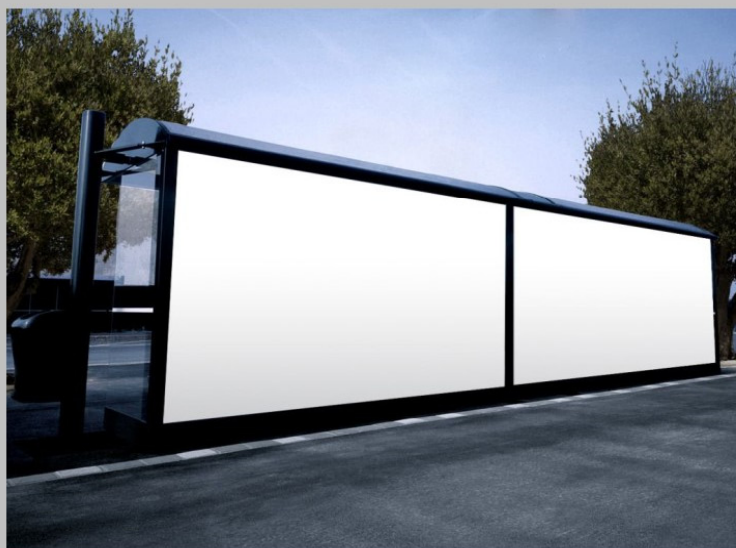
Description of products:

HTD-RS-A1 (Single side)Constitute by:

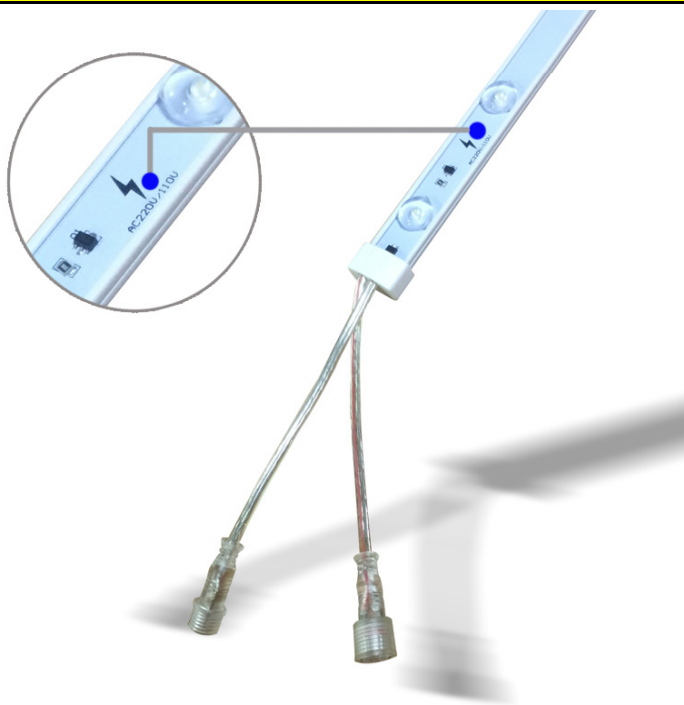
1.5mm MCPCB and Pure copper lines with waterproof silicone cover, 3030SMD high power LED and good quality optical Lens. 160° angle beam can be do well working on use for back light and Supplementary lighting. Good insulation performance.

HTD-RS-A1 Working voltage is AC220V/110V Constant current circuit. We suggested a single string not more than 10PCS.

*Main used for replace tubes and other backlight product in light box. Easy installation, high alternative.



HTD-RS-A1 (Product photo show)



Photometric characteristics & Main material:

Item No.	CCT	LED quantity Single side	luminous flux (LM)	CRI	LED	PCB type	Main Materials
HTD-RS-A1	W/CW	15	>1200	>80	3030	MCPCB	PVC+PC+Silicone



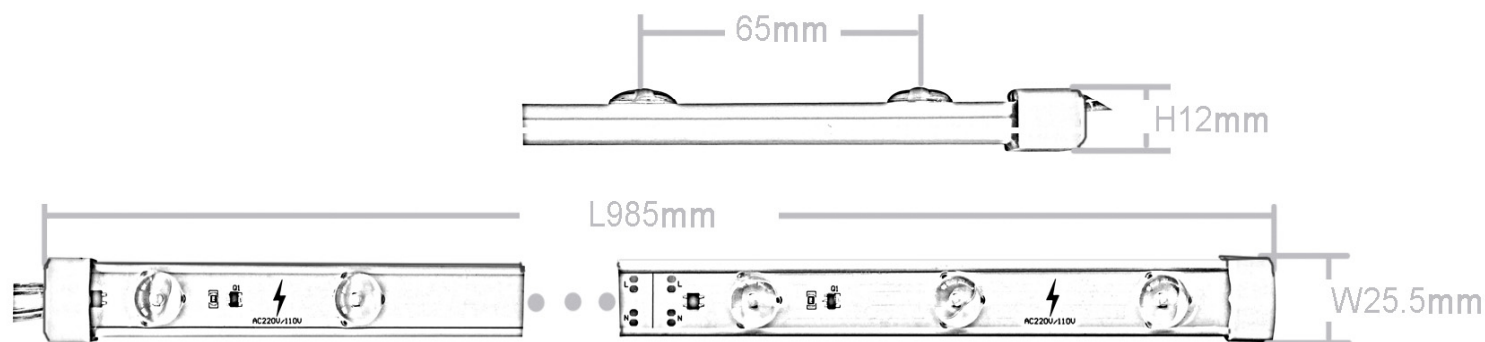
深圳鴻泰天地照明有限公司
Shenzhen HongTai World Lighting Co.,Ltd
LED Series professional manufacturer-Strength factory-Quality assurance

HTD-RS-A1 AC220V 110V LED high power rigid strip light SPEC 2019

HTD-RS-A1 AC220V 110V LED high power rigid strip light parameters:

Item	Parameters	Units
Working voltage	AV220/110	V
Working power	single side 15W	W
Working temperature	-40~60	°C
IP grade	IP65	*
Optional light color	Warm white/Pure white/Cool white	
Beam Angle	160°-180° flood light	
Light Source Lifespan	≥50000	hrs
Dimensions	L985*W25.5*H12	mm
Net Weight	0.222	Kg

Product size chart(mm):



Package info:

Every single side **IP65** HTD-RS-A1 10pcs per inner package, 5 packages in one box, 50pcs per carton box.

Carton size: 110cm*22cm*23cm.

Net Weight: 220g/pcs; 2440g/inner package; 13kg/carton.

*LED 220VAC bar-Package diagram



LED AC Bar



10pcs a Bubble cotton package

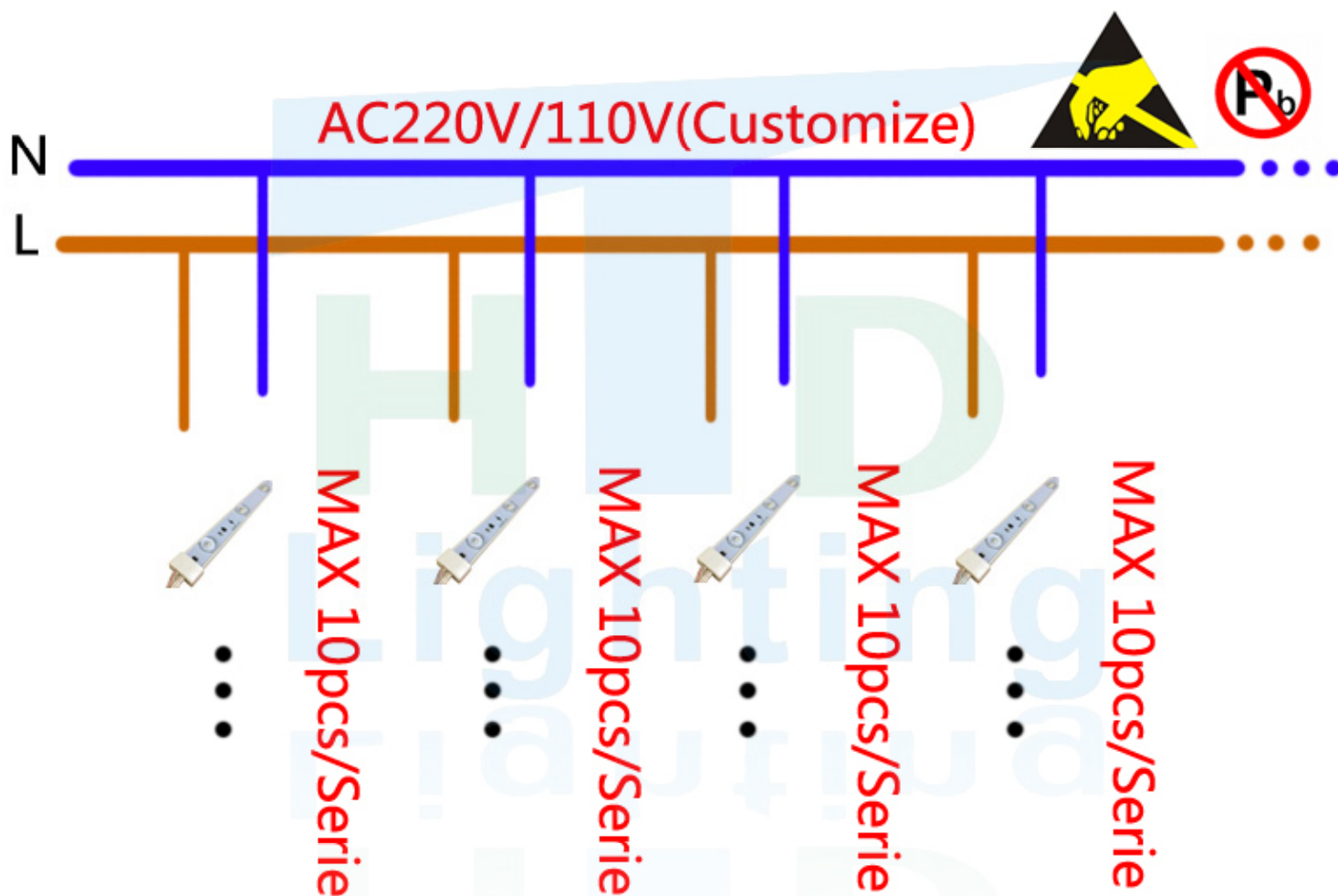


Carton Package



*HTD lighting LED AC220V/110V Bar

Wiring diagram



Tips:

1. MAX 10pcs/Serie;
2. Select electric wires strictly according to local electrical standards;
3. Please do not carry electricity when operation. It is not allowed to live repair and connect LED light source, pls wear insulated gloves if possible.

